

LEGEND

- ⊗ SET MAG NAIL IN CONCRETE BASE
4" + - BELOW SURFACE
 - SET 1/2" REBAR WITH ID CAP
 - × SET MAG PK NAIL WITH SHINER
 - ▲ FOUND RAILROAD SPIKE APPROXIMATELY 5"
DEEP, SET MAG PK NAIL WITH SHINER
AT SURFACE
 - FOUND 1" SQUARE IRON BOLT
 - POINT ESTABLISHED
 - FOUND IRON PIN
- NOTE: EXISTING BUILDING LOCATIONS AS SHOWN
ON SEWER PLANS

SEE DETAIL BELOW

**REPLAT OF
ROANZA BEACH SUBDIVISION**

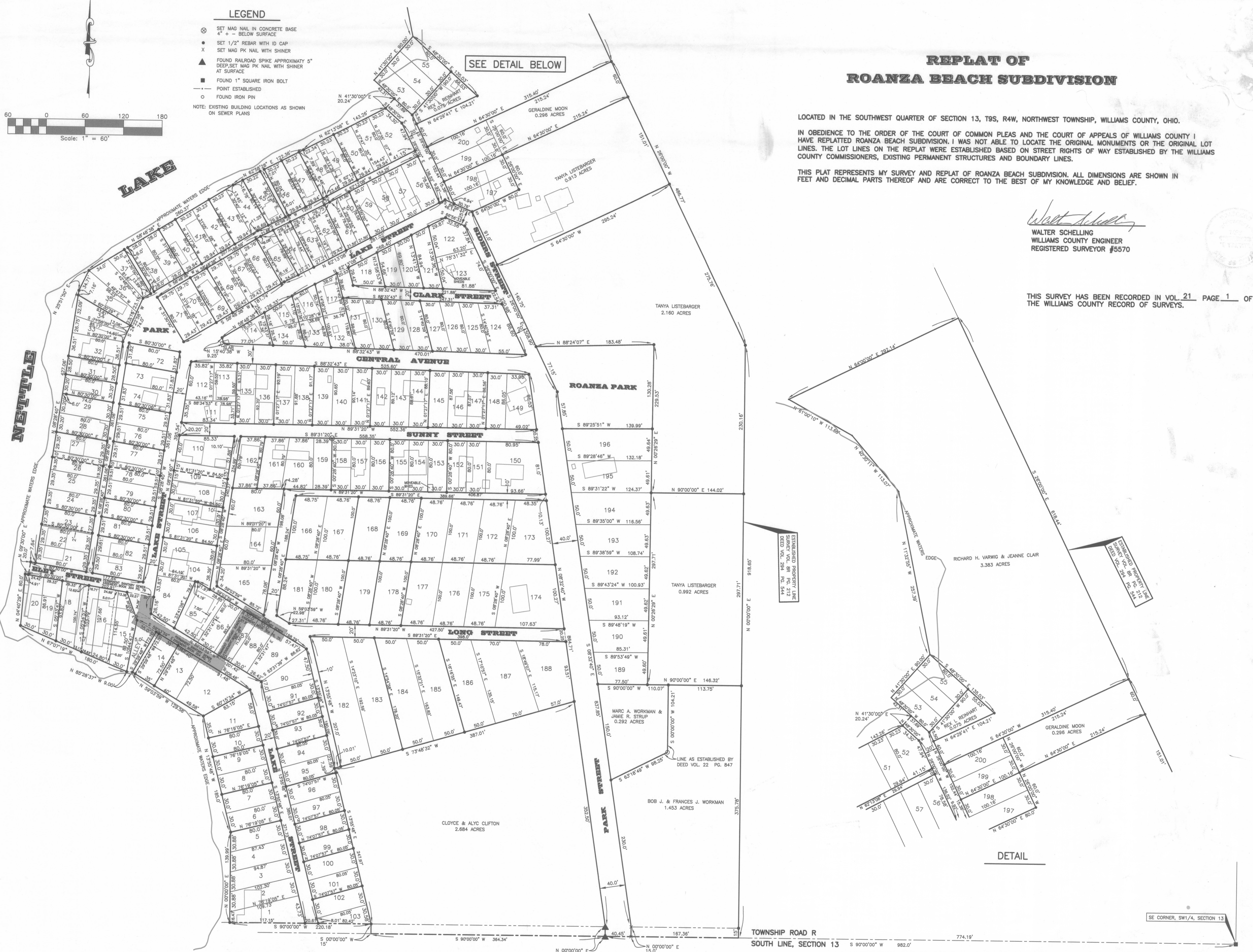
LOCATED IN THE SOUTHWEST QUARTER OF SECTION 13, T9S, R4W, NORTHWEST TOWNSHIP, WILLIAMS COUNTY, OHIO.

IN OBEEDIENCE TO THE ORDER OF THE COURT OF COMMON PLEAS AND THE COURT OF APPEALS OF WILLIAMS COUNTY I HAVE REPLATTED ROANZA BEACH SUBDIVISION. I WAS NOT ABLE TO LOCATE THE ORIGINAL MONUMENTS OR THE ORIGINAL LOT LINES. THE LOT LINES ON THE REPLAT WERE ESTABLISHED BASED ON STREET RIGHTS OF WAY ESTABLISHED BY THE WILLIAMS COUNTY COMMISSIONERS, EXISTING PERMANENT STRUCTURES AND BOUNDARY LINES.

THIS PLAT REPRESENTS MY SURVEY AND REPLAT OF ROANZA BEACH SUBDIVISION. ALL DIMENSIONS ARE SHOWN IN FEET AND DECIMAL PARTS THEREOF AND ARE CORRECT TO THE BEST OF MY KNOWLEDGE AND BELIEF.

Walter Schelling
WALTER SCHELLING
WILLIAMS COUNTY ENGINEER
REGISTERED SURVEYOR #5570

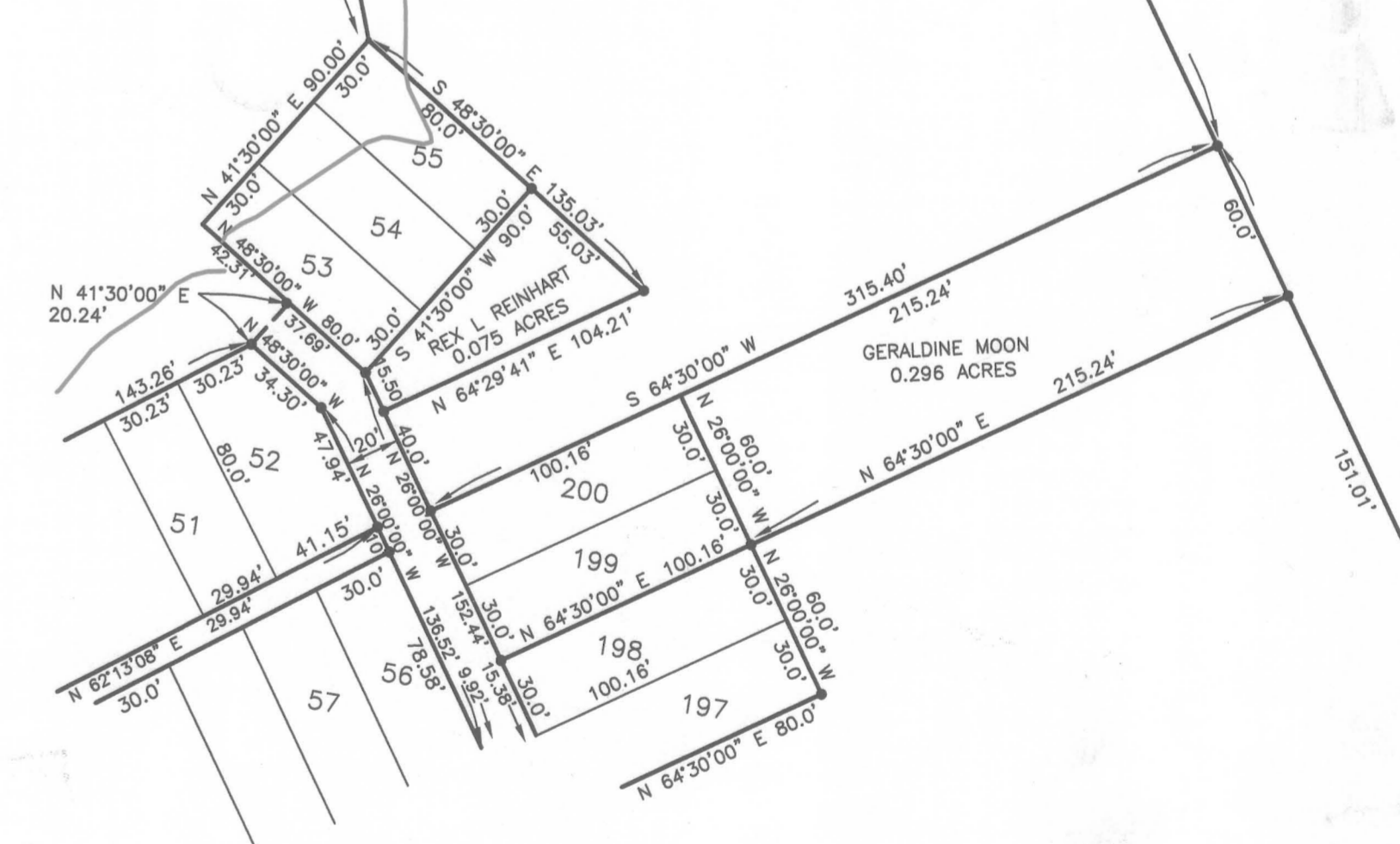
THIS SURVEY HAS BEEN RECORDED IN VOL. 21 PAGE 1 OF
THE WILLIAMS COUNTY RECORD OF SURVEYS.



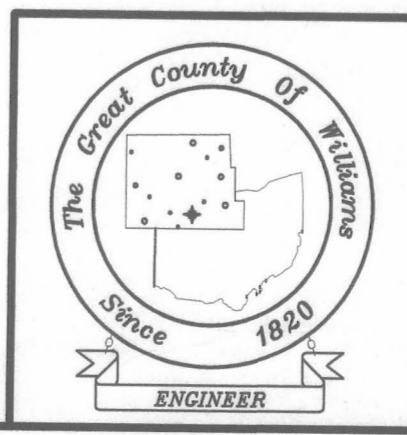
ESTABLISHED PROPERTY LINE
STARTING FROM THE
SOUTH CORNER OF DEED VOL. 22 PG. 847

ESTABLISHED PROPERTY LINE
STARTING FROM THE
SOUTH CORNER OF DEED VOL. 22 PG. 847

DETAIL



SE CORNER, SW 1/4, SECTION 13



APPROVED BY:	SHT. NAME: REPLAT OF ROANZA BEACH
DATE: Plotted on 10/07/02 at 15:53:04.	
DRAWN BY: L. P. C.	
WILLIAMS COUNTY ENGINEER 12953 COUNTY ROAD G BRYAN, OHIO 43506 PHONE 419 636 2454 FAX 419 636 8687	REPLAT OF ROANZA BEACH SUBDIVISION
	1
	1